

**Barnett
Waddingham**



City of Westminster Pension Fund

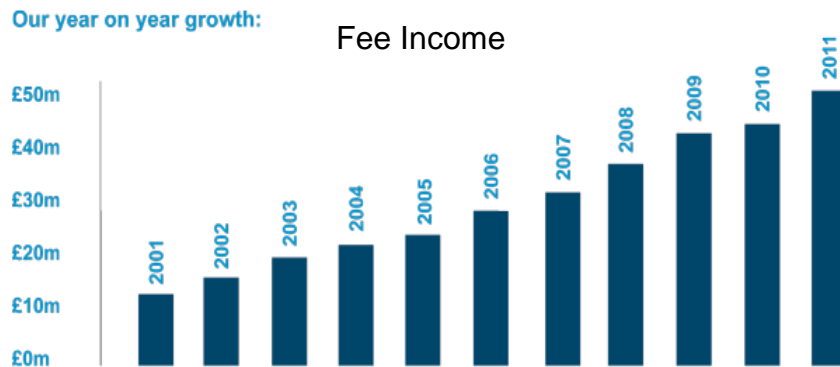
Actuarial Introduction

graeme.muir@barnett-waddingham.co.uk

February 2013

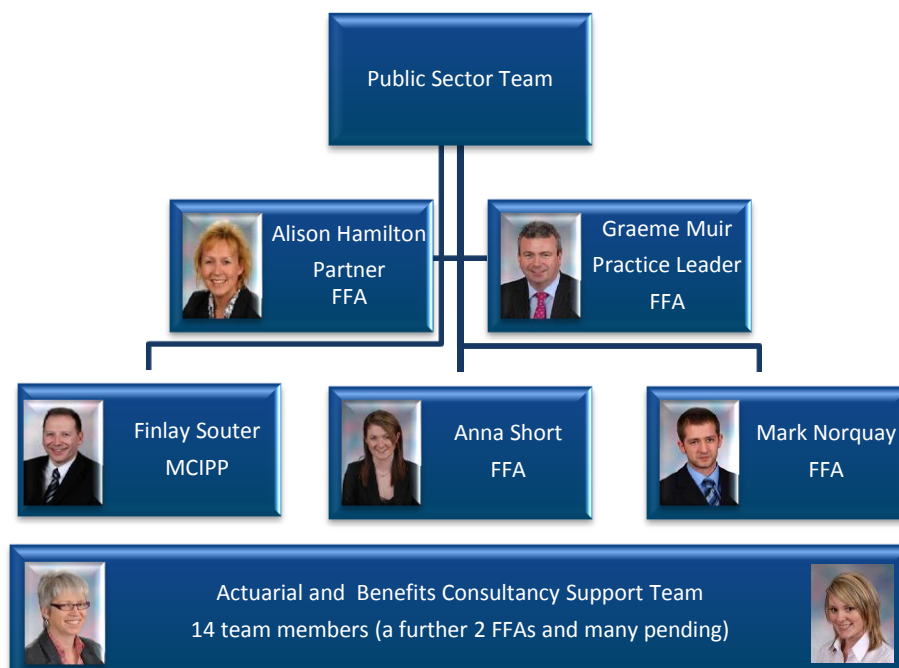
Barnett Waddingham LLP

- A people business
- Independent UK partnership
- Founded in 1989 (history dates back to 1960s)
- 55 partners and their teams
- Over 600 staff
- Over 100 qualified actuaries
- 7 UK offices



Our people

The Westminster Team



20+ years average LGPS experience at partner level
Graeme has advised 2/3rds of all LGPS Funds
Team currently advises 25% of LGPS Funds

Key features

Focus on efficient service delivery of employer services

- Accounting, cessation valuations etc

Stability of team members

- No leavers in 10 years

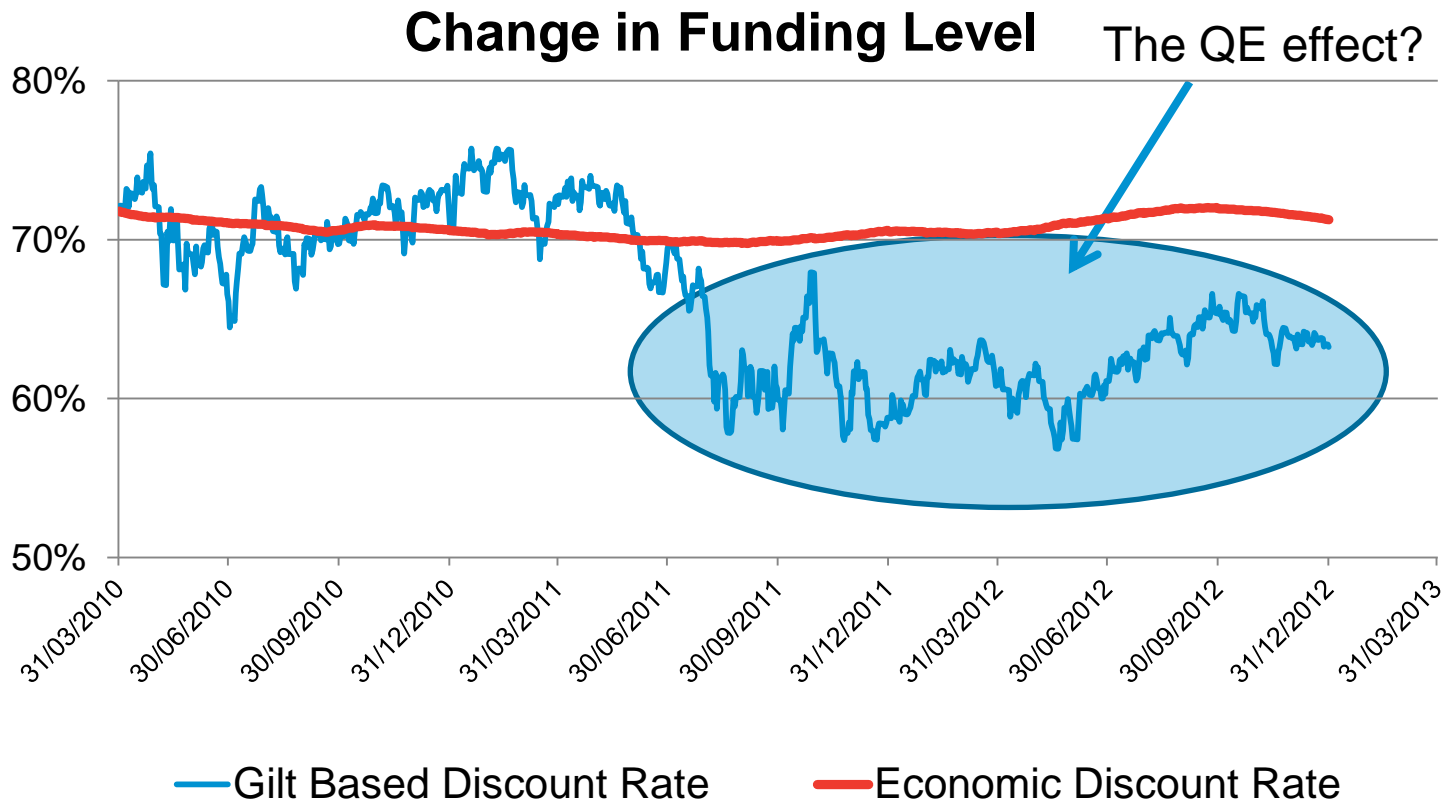
Bespoke LGPS Funding Model

- Focus on stability of employer contributions
- “QE proof”

Working with LGPS stakeholders

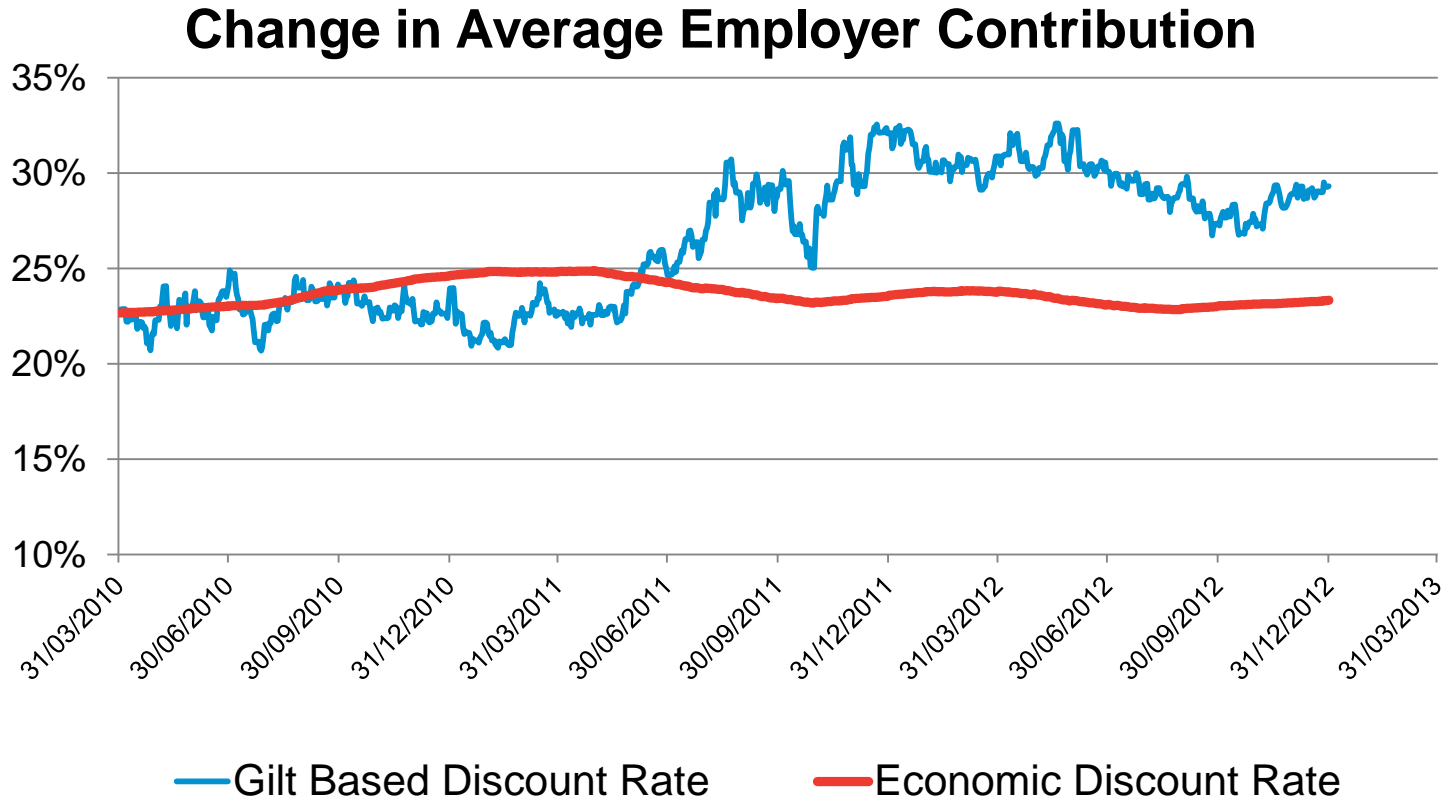
- Employers, CLG, unions

Change in Funding Levels



Gilt based funding level 4 times the volatility of economic model

Change in Employer Contribution



Key issues at 2013 valuation

Funding strategy

- Assumptions (discount rate, mortality etc)
- Recovery periods

Impact of LGPS 2014

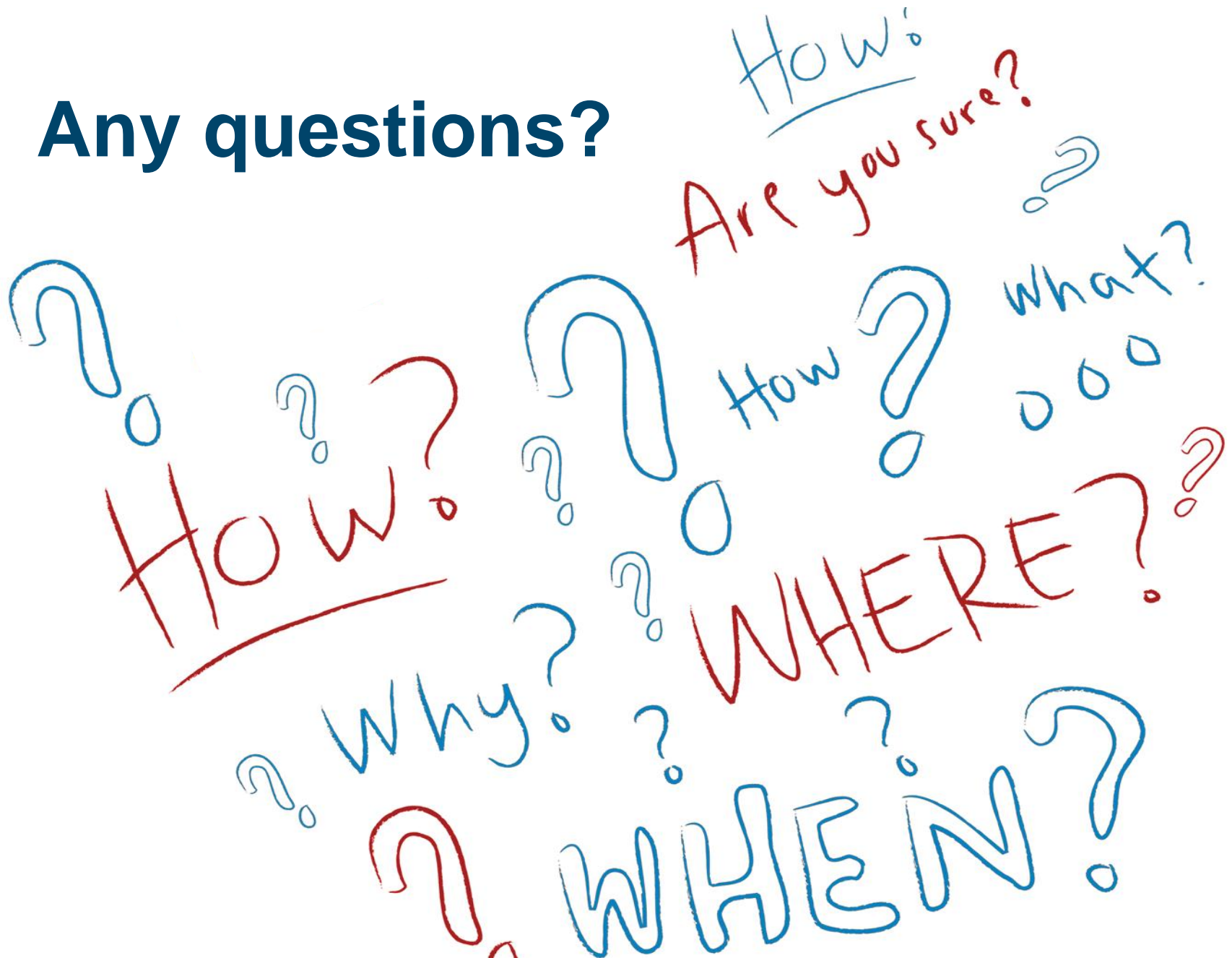
- New career average structure expected to generate some employer savings for some
- But no impact on deficits

Fund cashflows

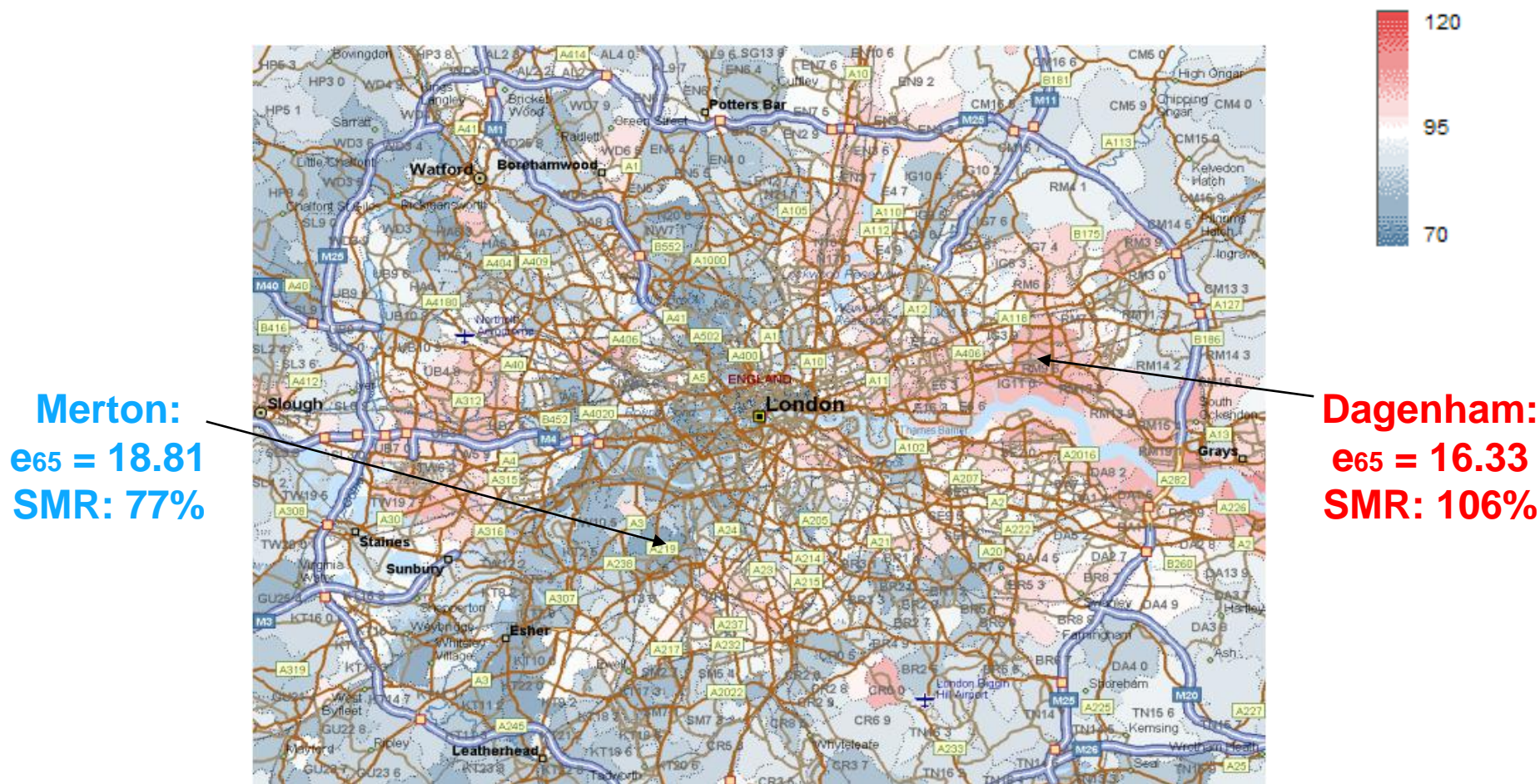
- Using investment income / assets to pay pensions

Results in the Autumn

Any questions?



Mortality by location



Source: Barnett Waddingham model based on ONS data