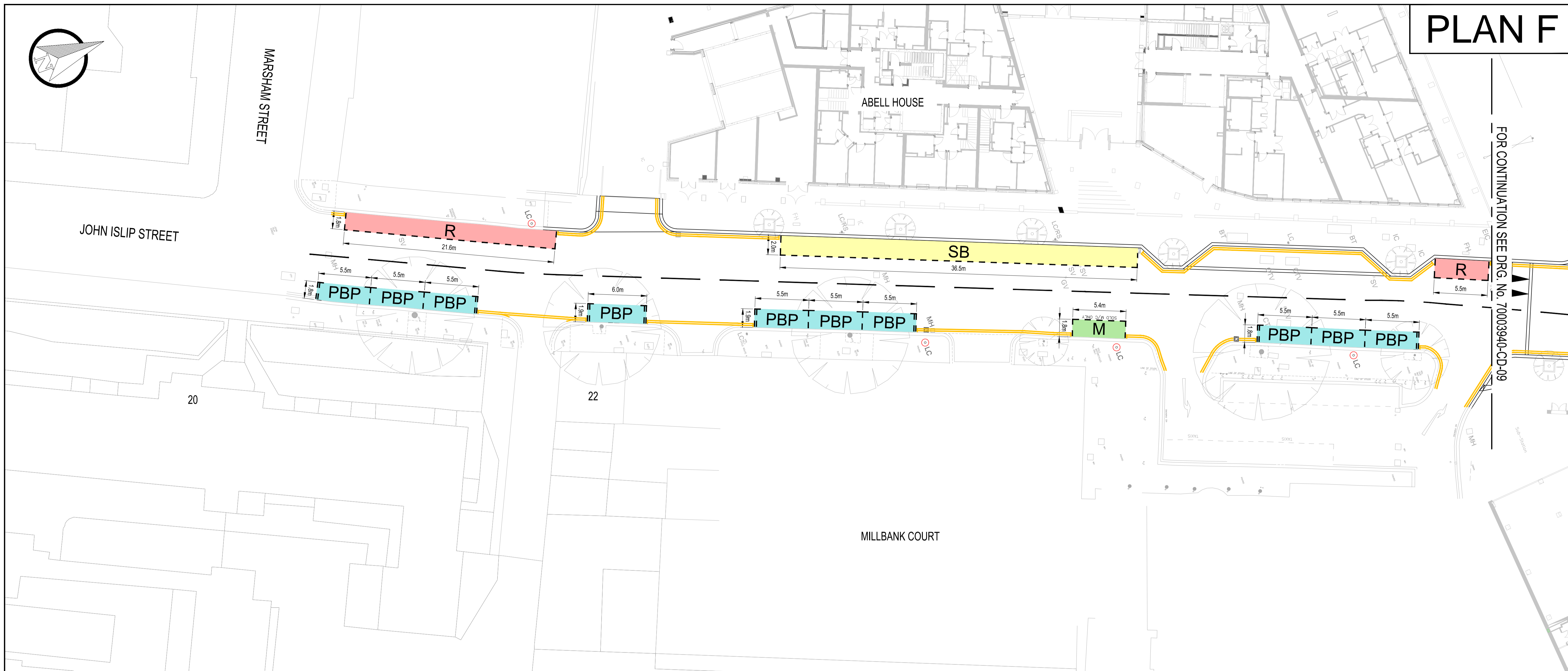


PLAN F



FOR CONTINUATION SEE DRG. NO. 70003940-CD-09

KEY

R	RESIDENTS' PARKING BAYS "MON-FRI 8:30AM-6:30PM"
M	MOTORCYCLE BAY
D	DISABLED BAY
SB	SHARED USE BAY "MON-FRI 8:30AM-6:30PM"
PBP	PAY BY PHONE BAYS "MON-FRI 8:30AM-6:30PM"
	CYCLE STANDS
	DOUBLE YELLOW MARKINGS NO WAITING "AT ANY TIME"
	SINGLE YELLOW MARKINGS NO WAITING, MON-FRI 8:30AM-6:30PM

AGGREGATE CHANGES			
Type of parking	Existing	Proposed	Difference
Residents parking (Mon - Fri 8:30am - 6:30pm)	125.4 metres	125.0 metres	-0.4 metres
Pay-by-phone parking (Mon - Fri 8:30am - 6:30pm)	10 bays	10 bays	0 bays
Disabled parking	2 bays	2 bays	0 bays
Motorcycle parking	5.4 metres	5.4 metres	0.0 metres
Shared use parking (Mon - Fri 8:30am - 6:30pm)	39.5 metres	53.0 metres	+13.5 metres
Cycle stands	12 stands	17 stands	+5 stands
Double yellow lines ("At any time")	125.7 metres	266.1 metres	+140.4 metres
Single yellow lines (Mon - Fri 8.30am - 6.30pm)	186.7 metres	29.3 metres	- 157.4 metres

- NOTES:**
- THIS DRAWING IS TO BE READ IN CONJUNCTION WITH DRAWING No. 70003940-CD-09.
 - FOR EXISTING PARKING/ LOADING RESTRICTIONS REFER TO DRAWING Nos. 70003940-CD-07 AND 08.

REV	DATE	BY	DESCRIPTION	CHK	APD
C	17.08.2015	PAD	RESIDENTS, SHARED USE BAYS ADDED AND TABLE UPDATED		
B	17.04.2015	DW	UPDATED FOLLOWING TMO COMMENTS	CB	JK
A	13.04.2015	DW	INITIAL ISSUE	CB	JK

CLIENT:

DRAWING STATUS:

CONSULTATION	
SCALES	1:200
ORIGINAL SIZE	A1
DATUM	OS_DATA
GRID	OS_DATA

ORIGINAL ISSUE SIGNATURES

CHECKED: [Signature]
APPROVED: [Signature]

Copyright reserved

PROJECT:

ABELL HOUSE AND CLELAND HOUSE
JOHN ISLIP STREET

TITLE:

TMO CONSULTATION
PROPOSED PARKING / LOADING RESTRICTIONS
SHEET 2 OF 2

25 Mandela Way, London, SE1 1SZ
www.falconway.co.uk www.wspgroup.com

DRAWING No: 70003940-CD-10

Rev: C

T:\Abell and Cleland\Initial Design Drawings\WSP\Consultation\70003940-CD-10.dwg 21 Aug 2015 - 3:04pm

This map is reproduced from Ordnance Survey material with the permission of Ordnance Survey on behalf of the Controller of Her Majesty's Stationery Office © Crown copyright. Unauthorised reproduction infringes Crown copyright and may lead to prosecution or civil proceedings. (WCC/LA 10009597)