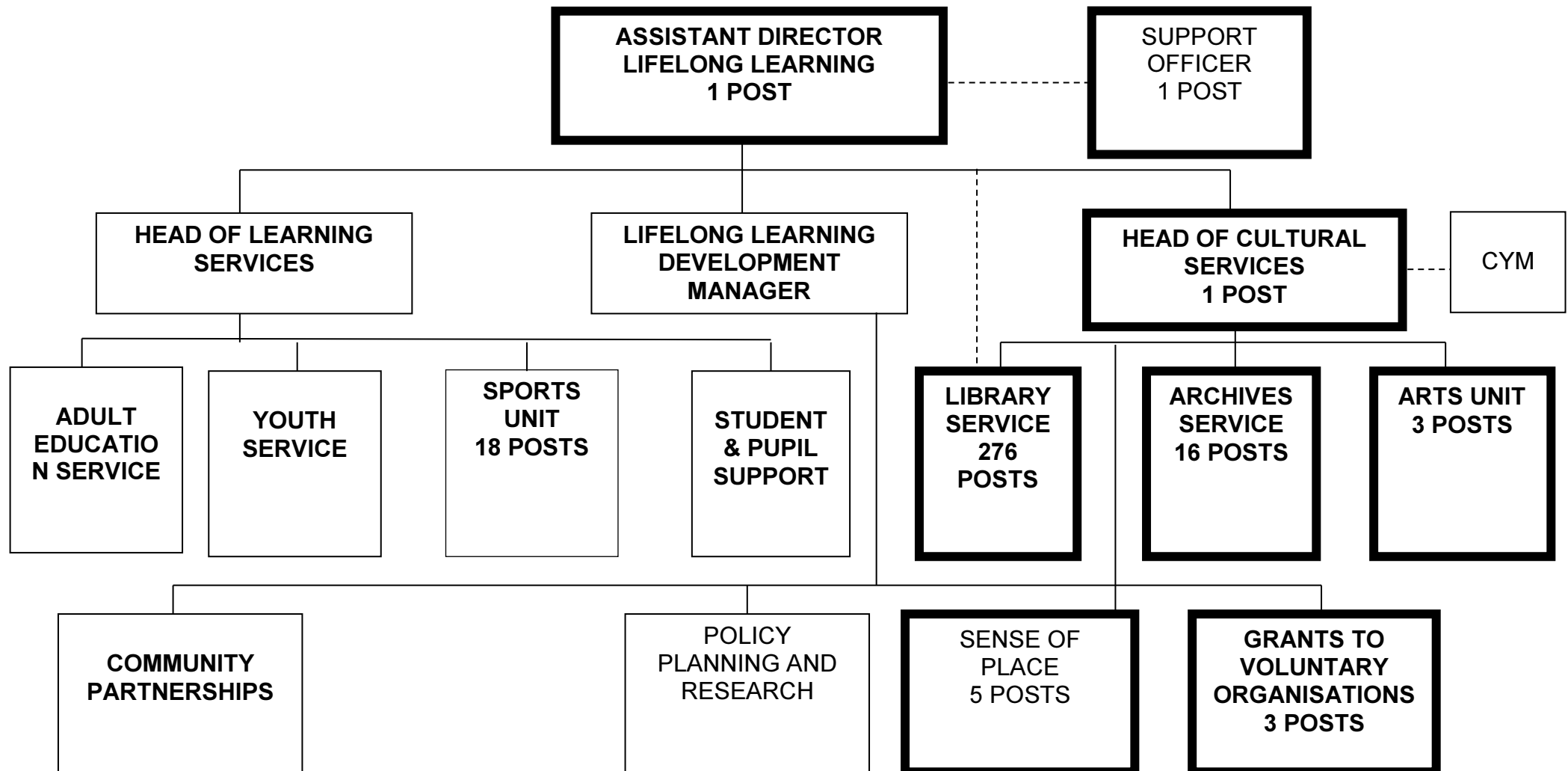


**APPENDIX A**  
**CURRENT STRUCTURE OF LIFELONG LEARNING DIVISION**

HIGHLIGHTED FUNCTIONS ARE THE SUBJECT OF THIS REPORT. PLEASE SEE NOTES ON FOLLOWING PAGE.



## Notes

1. The Head of Cultural Services line manages the Sense of Place project team and leads the project to refocus and secure the future sustainability of the Centre for Young Musicians.
2. Since June 2002, the Library service and the Corporate Grants Unit have reported directly to the Assistant Director (Lifelong Learning) and will continue to do so.
3. Sayers Croft Field Studies Centre is part of the Schools division of the Education Department, reporting to Assistant Director School Effectiveness.
4. Transitional arrangements will be made to cover the corporate and departmental responsibilities of the Assistant Director Lifelong Learning and the Head of Cultural Services within the Education Department pending the appointment of a new Director.